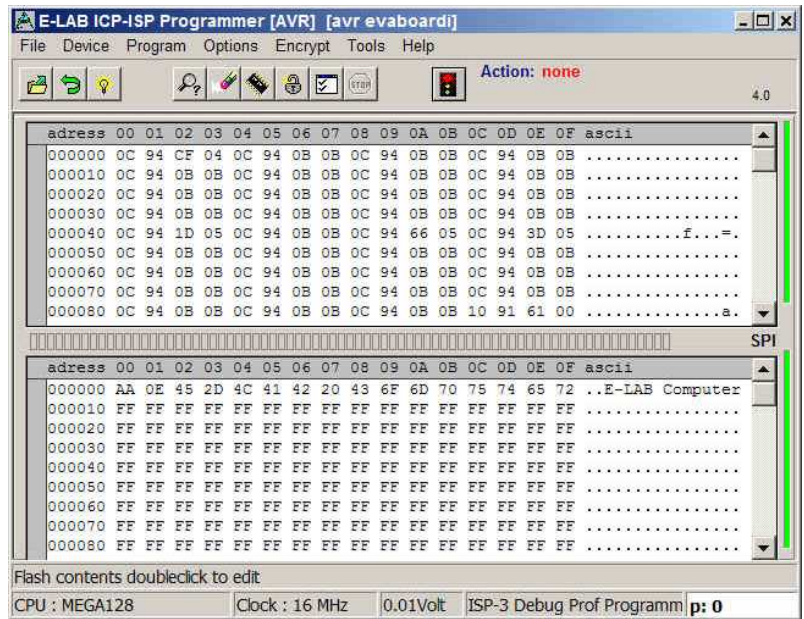


ISP3-USB/ETH



Incircuit Programmer for AVR, AT89Sxx, AT89LSxx, AT89LPxx, TI/Chipcon CC1110, CC2510 and CC2430 programs S1200...mega256 in ISP and JTAG Mode

- ISP3-USB connects to the PC the USB interface. With USB-ETH the Ethernet interface is used.
- ISP3-USB works in the High-Speed USB-2 mode (480Mbit/sec). Can also be connected to USB-1 ports and HUBs
- ISP3-ETH has an Ethernet interface which must be connected to a switch. POE enabled switch preferred
- No power supply necessary. The ISP3 can be supplied from the PC interface (USB), from a switch (ETH) with POE or from target.
- Automatic adaption to the target voltage (2.7-6Volt, ca. 17mA)
- Powerful and extensive software
- Software runs on Win98/2000/XP. Win98 with some exceptions.
- Small, lightweight and handy device ca. 100x55x20mm
- Supports all SPI or JTAG programmable **AVRs**
- Supports all SPI programmable **AT89Sxx**, **AT89LSxx** and **AT89LPxx** types
- Supports the TI/ChipCon **CC1110**, **CC2510** and **CC2430** family
- Programmable output voltage (supply) for the target system. 3.3..5.2Volt 30mA..300mA
- Self update with new firmware through the Internet.
- Programs **128kB** Flash in ca. **3sec** (Mega128 JTAG Mode)
- **SPI und JTAG** programming Support
- Supports the **JTAG Boundary Scan** of the target AVR
- Option external switching power supply 100..250VAC with 8Volt/400mA (not included)
- Option adaptor from Atmel 6pol SPI to Atmel 10pol program connection (not included)
- Option adaptor from E-LAB JTAG to Atmel JTAG program connection (not included)
- Option adaptor from ISP3 6pin to TI/ChipCon CC2430 evaluation board (not included)
- **ISP3-USB** with USB connection is optimal suitable for development desktop, programming stations and repair stations
- **ISP3-ETH** with Ethernet connection is optimal suitable for production purposes. Extensive support for gang programming (multi panels) in the production. Plain but efficient interface for remote controlling upto 32 programmers through TCP/IP

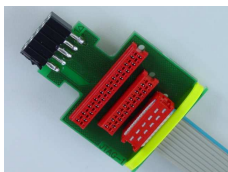
Price ISP3-USB €135.00 +ship
Price ISP3-ETH €190.00 +ship

E-LAB Computers
Grombacherstr. 27
D74906 Bad Rappenau

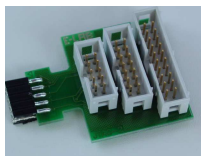
Tel. 07268/9124-0
Fax. 07268/9124-24
www.e-lab.de info@e-lab.de

E-LAB In-Circuit Programmer

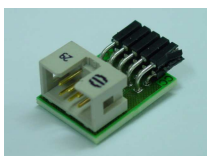
ISP3-USB **ISP3-ETH**



As an option an adaptor is available from E-LAB 6pin SPI to AVR 10pin SPI



As an option an adaptor is available from E-LAB 10pin JTAG to Atmel 10pin JTAG



As an option an adaptor is available for the Chipcon Evaluation Boards CC1110..CC2511



As an option an adaptor is available for the Chipcon Evaluation Board CC2430DB

E-LAB Computers
Grombacherstr. 27
D74906 Bad Rappenau

Tel. 07268/9124-0
Fax. 07268/9124-24
www.e-lab.de info@e-lab.de